



## 2 Banks Road, London, SE3 9JD

**£460 Per Week**

BARBER HOUSE IS ONE OF LATEST BUILDINGS TO COMPLETE IN THE KIDBROOKE VILLAGE DEVELOPMENT CONVENIENTLY LOCATED IN THE ROYAL BOROUGH OF GREENWICH, ZONE 3 WITH ITS OWN ON SITE STATION

Our one bedroom apartment is located on the 4th floor facing East with accommodation set over 590 sq feet comprising of a spacious and bright reception room with open plan fully fitted kitchen, access to an East facing balcony with views over the internal gardens and a master bedroom with ample built in storage. There is a modern luxury bathroom and a utility cupboard off the hallway,

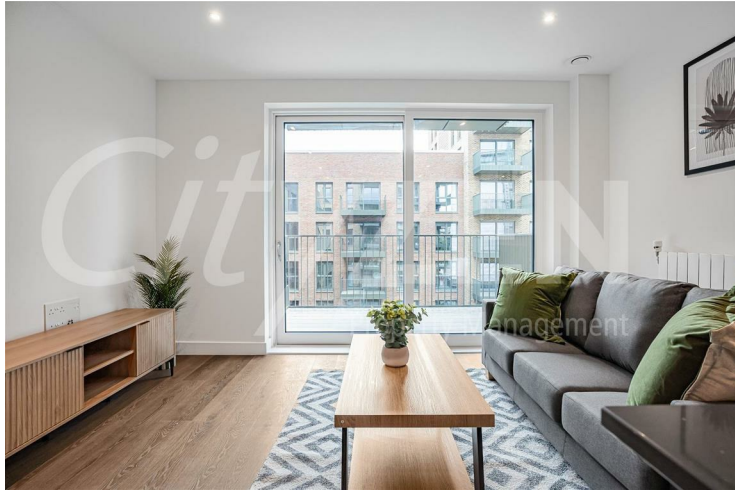
Kidbrooke Village has on site supermarket and the on site station offers excellent rail connections to London Bridge, Cannon Street, Charing Cross & Victoria.

Furnished  
AVAILABLE NOW

Marketing of On-Site Amenities and Agent Indemnity.

- BRAND NEW APARTMENT
- ONE BEDROOM LOCATED ON THE XXX FLOOR
- PART OF KIDBROOKE VILLAGE FLOOR
- ZONE 3 STATION
- LINKS TO LONDON BDG, CANNON ST, CHARING CROSS & VICTORIA
- ROYAL BOROUGH OF GREENWICH
- SET OVER 590 SQ FEET AND FACING EAST
- ON SITE SUPERMARKET & STATION
- CLOSE TO BLACKHEATH VILLAGE & GREENWICH
- FURNISHED & AVAILABLE NOW

**2 Banks Road, London, SE3 9JD**



**RECEPTION**



**KITCHEN/RECEPTION**



**RECEPTION**



**RECEPTION/KITCHEN**



**KITCHEN**



**BATHROOM**

**2 Banks Road, London, SE3 9JD**



**DRESSING ROOM/BEDROOM**



**BEDROOM**



**RECEPTION**



**BEDROOM**



**BEDROOM**



**BEDROOM**

## 2 Banks Road, London, SE3 9JD



BALCONY



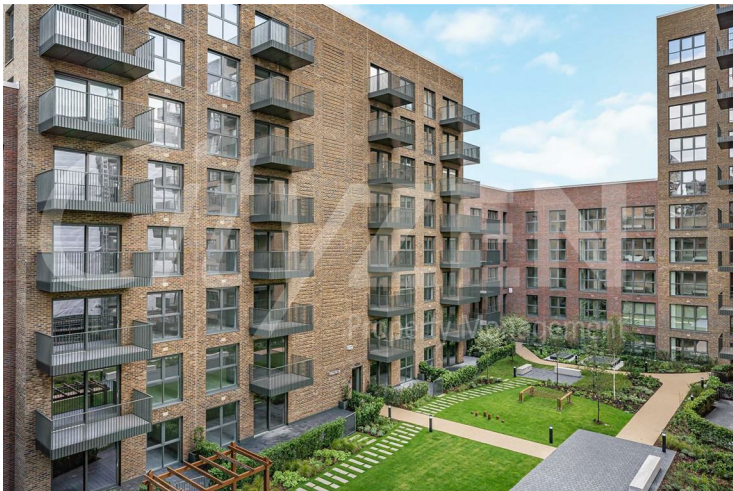
BARBER HOUSE



BALCONY



BARBER HOUSE

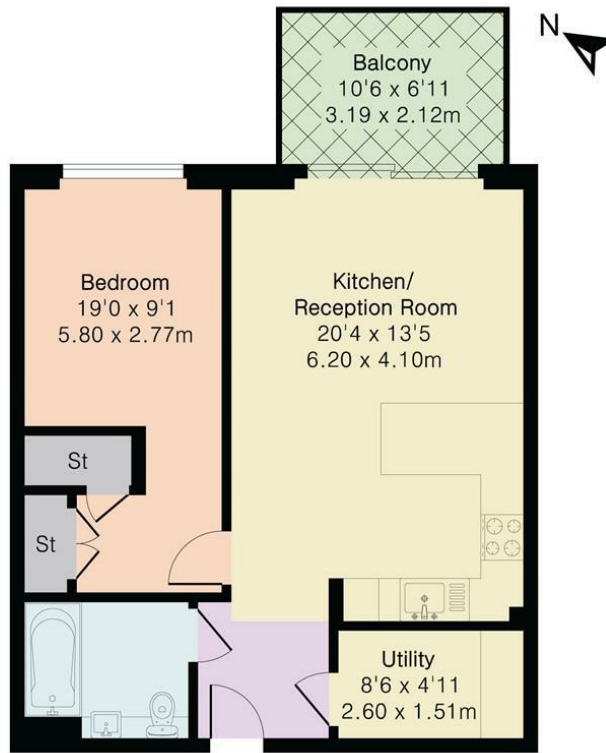


VIEW FROM BALCONY



KITCHEN/RECEPTION

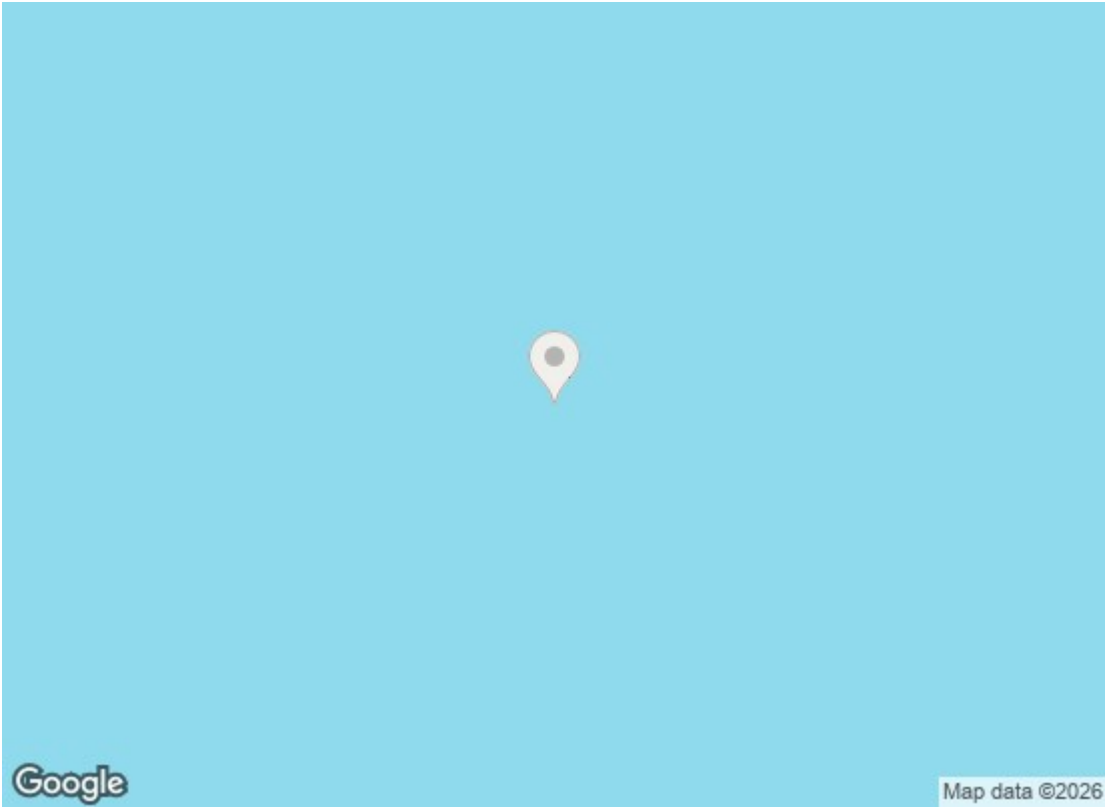
Approximate Gross Internal Area 591 sq ft - 55 sq m



Fourth Floor



Floor plan produced in accordance with RICS Property Measurement 2nd Edition. Although Pink Plan Ltd ensures the highest level of accuracy, measurements of doors, windows and rooms are approximate and no responsibility is taken for error, omission or misstatement. These plans are for representation purposes only and no guarantee is given on the total square footage of the property within this plan. The figure icon is for initial guidance only and should not be relied on as a basis of valuation.



Energy Efficiency Rating		
	Current	Potential
Very energy efficient - lower running costs		
(92 plus) <b>A</b>		
(81-91) <b>B</b>	<b>85</b>	<b>85</b>
(69-80) <b>C</b>		
(55-68) <b>D</b>		
(39-54) <b>E</b>		
(21-38) <b>F</b>		
(1-20) <b>G</b>		
Not energy efficient - higher running costs		
EU Directive 2002/91/EC		
Environmental Impact (CO <sub>2</sub> ) Rating		
	Current	Potential
Very environmentally friendly - lower CO <sub>2</sub> emissions		
(92 plus) <b>A</b>		
(81-91) <b>B</b>		
(69-80) <b>C</b>		
(55-68) <b>D</b>		
(39-54) <b>E</b>		
(21-38) <b>F</b>		
(1-20) <b>G</b>		
Not environmentally friendly - higher CO <sub>2</sub> emissions		
EU Directive 2002/91/EC		

We have prepared these property particulars as a general guide to a broad description of the property. They are not intended to constitute part of an offer or contract. We have not carried out a structural survey and the services, appliances and specific fittings have not been tested. All photographs, measurements, floorplans and distances referred to are given as a guide only and should not be relied upon for the purchase of carpets or any other fixtures or fittings. Lease details, service charges and ground rent (where applicable) and council tax are given as a guide only and should be checked and confirmed by your Solicitor prior to exchange of contracts.